

Hafslund Nett



*Jordfeildeteksjon ved
automatisert analyse av
AMS-data*

Åshild Vatne
Rådgiver FoU & Smart Grid
20 september 2017


Det er vår jobb som bransje å finne nytteverdi utover forbruksdata




10 MRD. NOK

3500 NOK




Jordfeil



Google

jordfeil

Alle Bilder Nyheter Videoer Shopping Mer Innstillinger Verktøy

Omtrent 50 700 resultater (0,48 sekunder)

Feil på elektriske anlegg eller apparater kan føre til **jordfeil**. **Jordfeil** kan utgjøre stor brann- og berøringsfare. **Jordfeil** oppstår når strømførende ledninger kommer i kontakt med jordete og utsatte deler av det elektriske anlegget, eller i direkte kontakt med jordleder.

Jordfeil - Hafslund Nett AS
<https://www.hafslundnett.no/feil/jordfeil/12321>

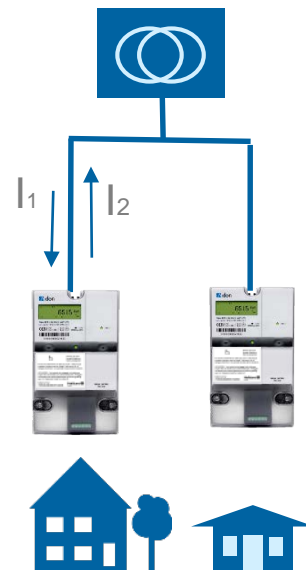
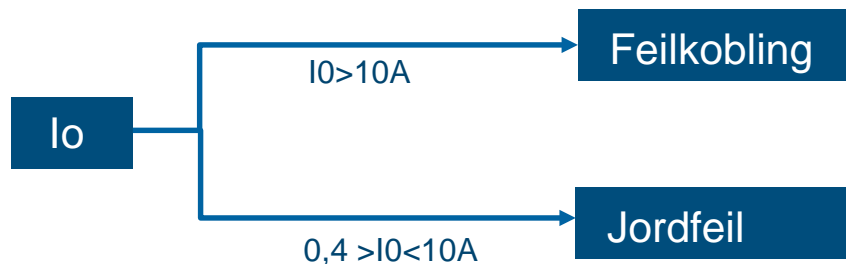


elfag blogg.no

I følge REN (REN blad 4020) kan rett bruk av AMS data for å håndtere jordfeil gi ein avkastningsverdi på 10-22%.

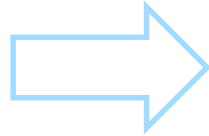
AMALGO (Advanced MACHine Learning for Grid Operations)

Demonstrere bruk av **maskinl ring** for analyse og vedta aksjoner **basert p  AMS data**.

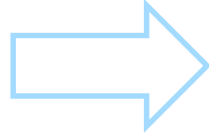


Resultat

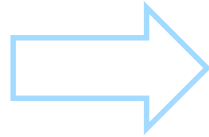
20 000 målere



200 potensielle feilkoblinger



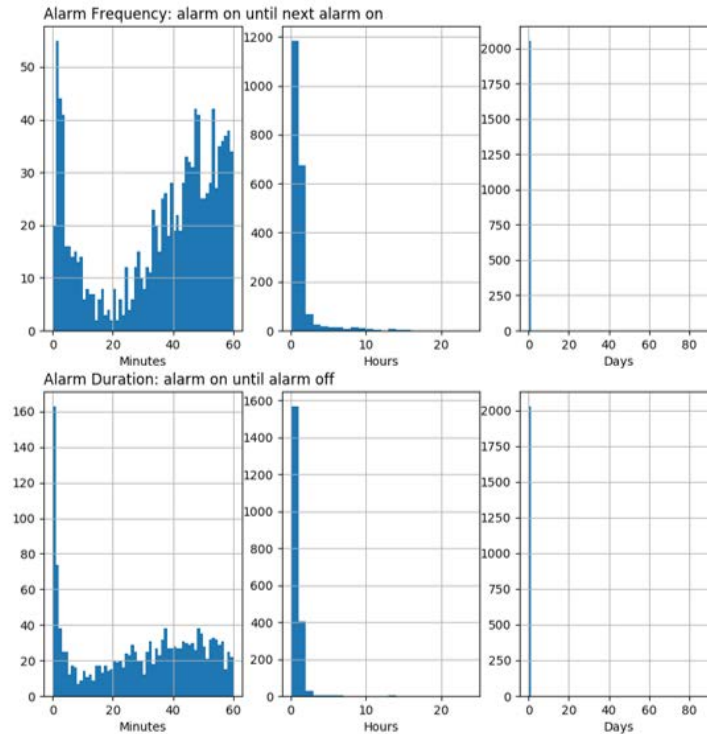
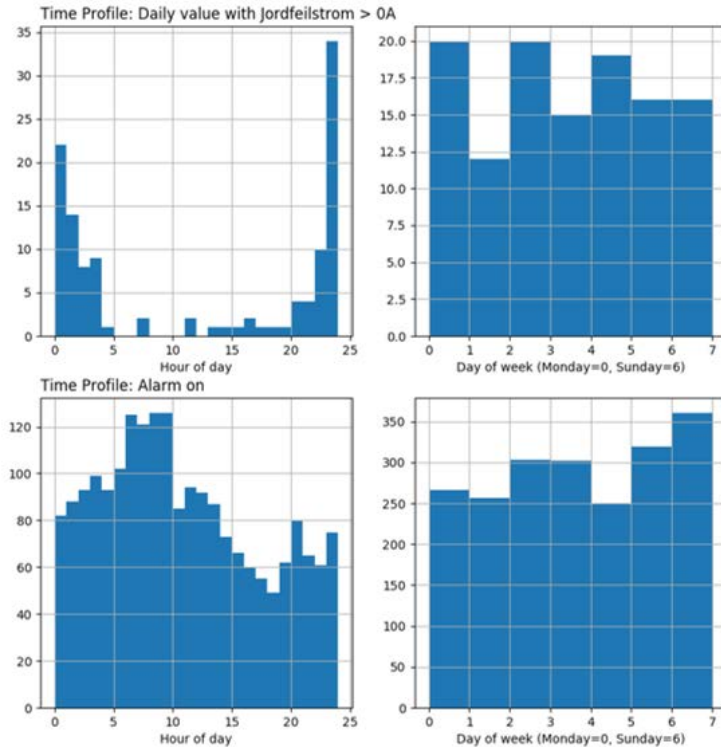
70 potensielle jordfeil
4 potensielle doblejordfeil



2 feilkoblinger i TN-nett

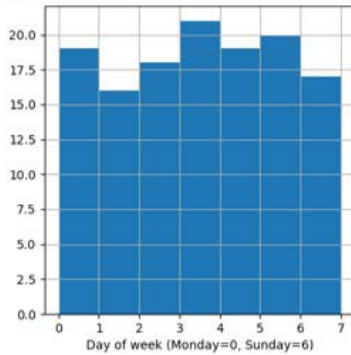
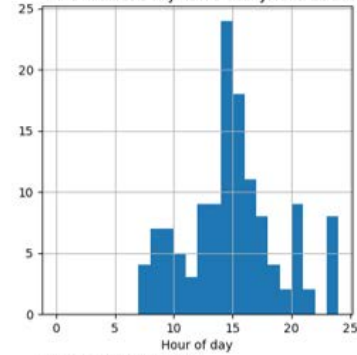


Innsikt – feilstrøm

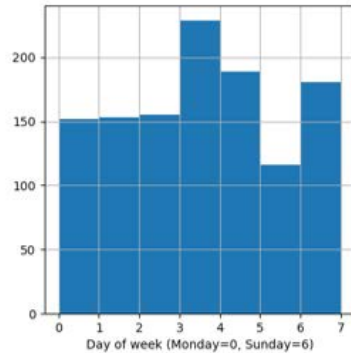
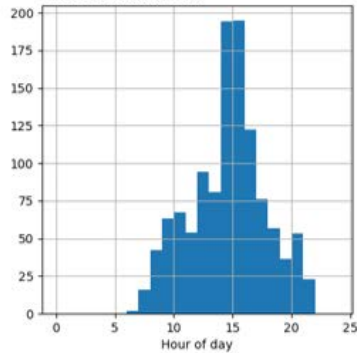


Innsikt – feilstrøm

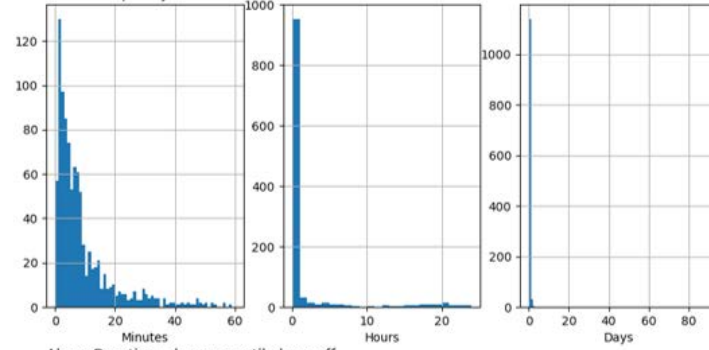
Time Profile: Daily value with Jordfeilstrom > 0A



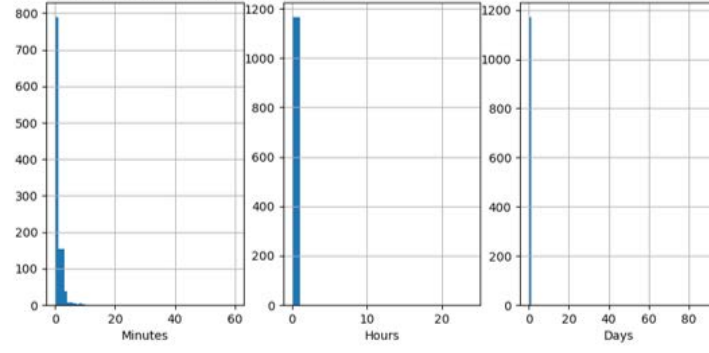
Time Profile: Alarm on



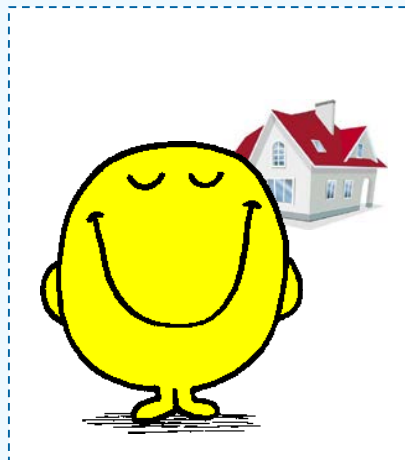
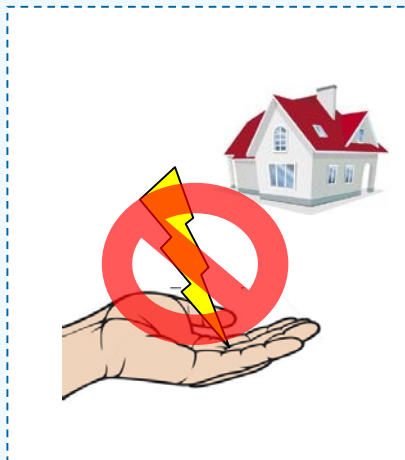
Alarm Frequency: alarm on until next alarm on



Alarm Duration: alarm on until alarm off



Det er vår jobb som bransje å finne nytteverdi utover forbruksdata





Åshild Vatne
ashild.vatne@hafslund.no